



Norseman Silver “The Opportunity”

TSX-V:NOC

Q:NOCSF

www.norsemansilver.com

January 20, 2023



Taquetren Project, Patagonia, Argentina

59,276,491
Shares Issued

16,592,488
Warrants

5,600,000
Options

81,468,979
Fully Diluted

Share Structure

*as of January 15, 2023

Directors & Management

Campbell Smyth
Chairman & Director

Sean Hurd
President & CEO,
Director

Kyler Hardy
Director

John Seaman
Director

David Robinson, CFO

Rene Victorino
VP Exploration

COMPANY INTRODUCTION

Norseman Silver vision is to maintain a fully active exploration strategy that is ongoing year round to maximize our shareholders exposure to exploration success.

Our recent discovery in Argentina:

7.7% copper over 300 metres.

12.2 grams per tonne gold over 0.2 metres

Gold Ridge Zone measuring 2 x 0.5 km

We have first mover advantage on much of our ground and we will continue to grow, expand and succeed!

WHY INVEST WITH US?

- Management with a history of discoveries
- Projects in under explored mineralized regions
- Skilled property generators
- Proven track record in financial markets
- A team totally committed to success!

Norseman Silver Ltd. Suite 520 - 999 West Hastings Street, Vancouver, BC, Canada V6C 2W2
info@norsemansilver.com www.norsemansilver.com Tel: 604-505-4554



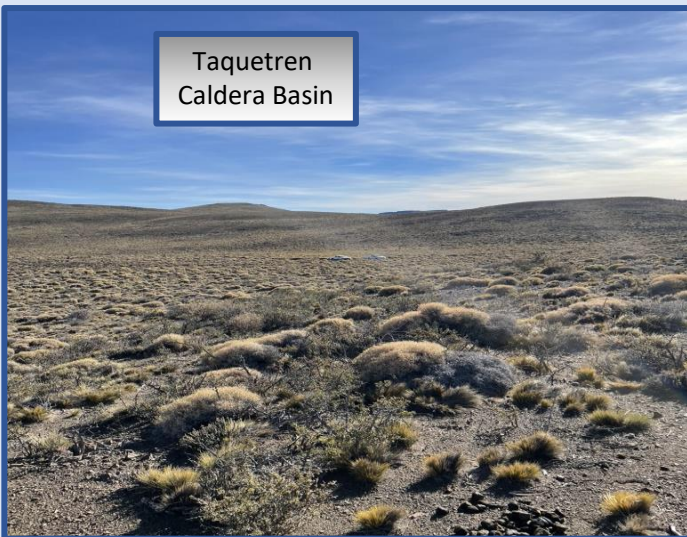
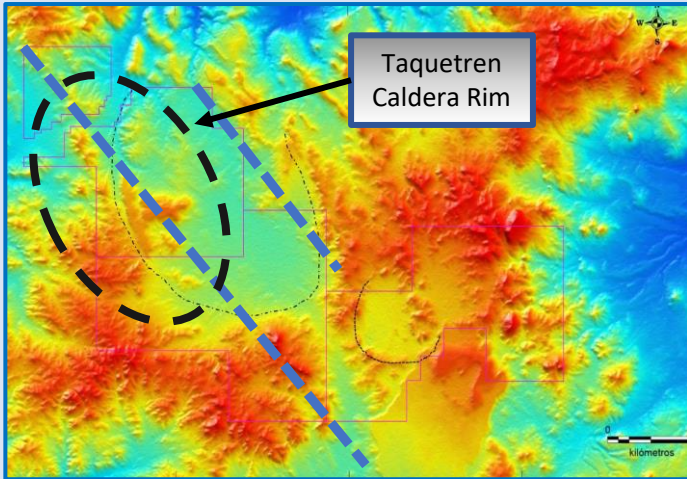
Norseman Silver “The Opportunity”

TSX-V:NOC

Q:NOCSF

www.norsemansilver.com

January 20, 2023



Rio Negro, Argentina

Taquetren Highlights:

- **7 samples collected at Veta Juan zone averaged 7.73% copper over 300 metres.**
- **12.2 grams per tonne gold over 0.2 metres.**
- **11.5 grams pre tonne gold over 0.4 metres**
- **Gold Ridge Zone measuring 2 x 0.5 km**
- 4 significant mineralized targets identified (Veta Juan, Irma, Veta Nueva-Mirasol, Martha) over 5 km.
- Targets located along perceived rims of volcanic caldera complex.
- No evidence of previous base or precious metals exploration, first mover advantage.

British Columbia, Canada

Highly prospective for silver and copper mineralization.

- Silver Switchback, 55 km S-SE of Terrace
- Cariboo, 36 km W of Smithers
- Silver Vista, 55 km NE of Smithers